



company **PROFILE**

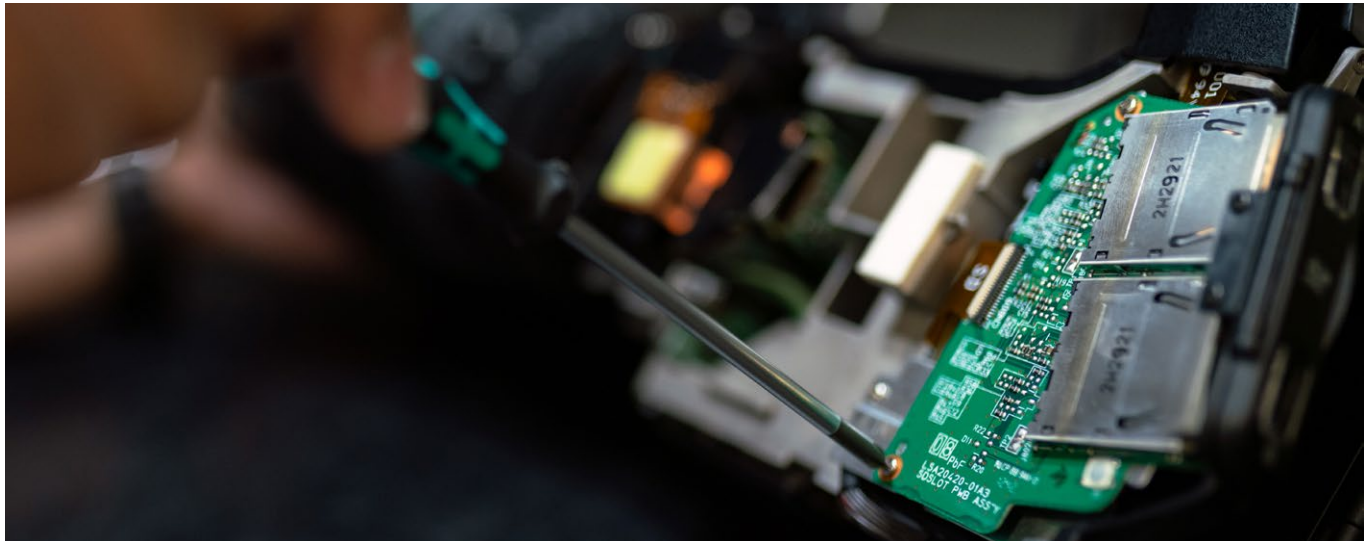
NETHiX
WE CONTROL

company **PROFILE**



From the year 2000 we develop and manufacture complete solutions for the remote access, monitoring and control.

We are a young and dynamic team of engineers and professionals, specialized in the engineering and in the Hardware, Firmware and Software development of embedded systems. Finding the right solution for every customer, and reducing the effect of the distance between the plant and its supervisor, it's for us the most important challenge and our greatest accomplishment.



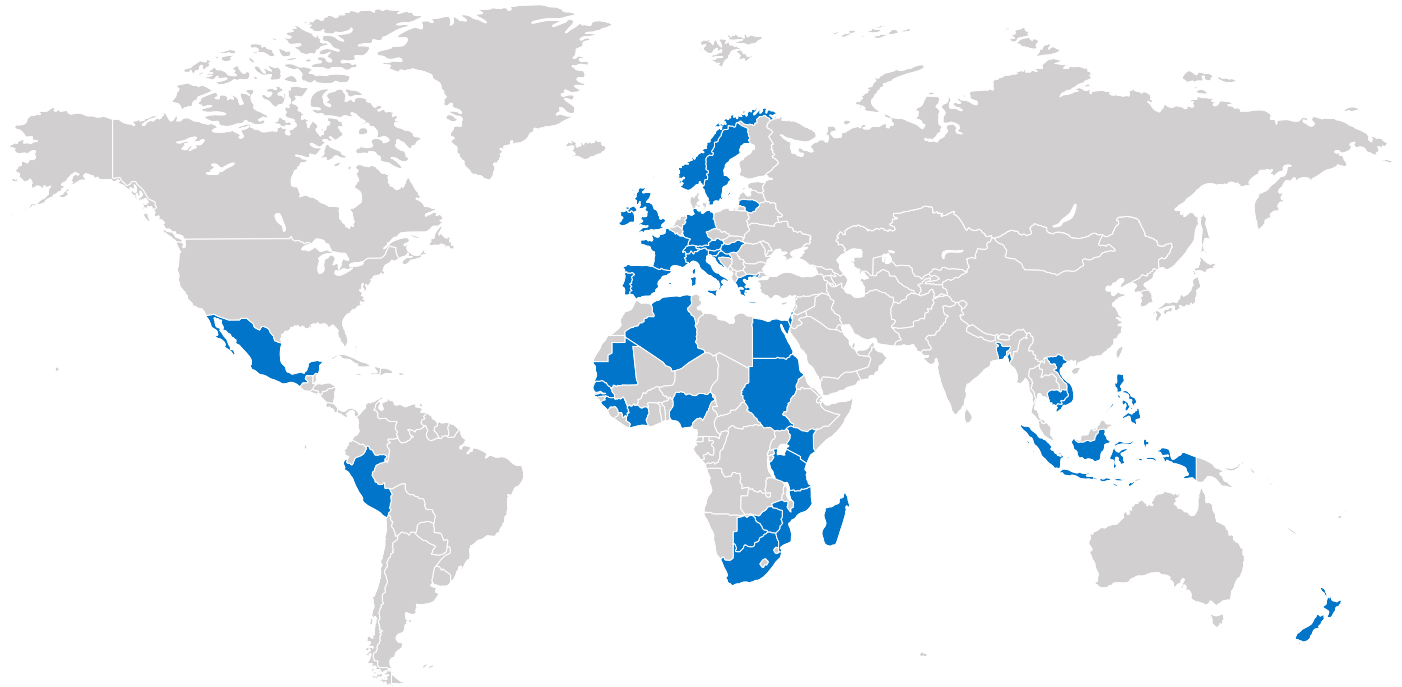
100% MADE IN ITALY

We design and manufacture entirely inside our Italian factory, in order to grant our customers the highest quality level and a first-class technical support.

Thanks to our long term experience we can offer a wide range of off-the-shelf products and plug-and-play solutions. Nevertheless we can be a first-class technological partner for the development of custom products and new solutions with a reduced time-to-market.

THE ADVANTAGES OF CHOOSING NETHIX SOLUTIONS

- Highest satisfaction of customers thanks to reliable and easy-to-use products.
- Considerable reduction of maintenance costs.
- Increase of the performance and lifetime of the plants through a predictive diagnostic.



NETHIX WORLDWIDE

Our installations

Thanks to the highest quality and reliability, our products are successfully being deployed all over the world since over 20 years.

Our PRODUCTS



Reliability, usability and flexibility. Complete and versatile solutions, developed to shorten the distance between the machine and its supervisor.

Nethix offers a high-class range of products, able to fulfill the ever changing requirements of the market, and grants high compatibility, supporting several communication protocols. High-performance solutions that make the communication man-to-machine simpler and more efficient.

we111 we112 we113 we114 

THE COMPACT AND PROGRAMMABLE IoT MODULES

WE111-WE112-WE113-WE114 acquire signals from the field and deliver them to an external platform; they set and manage alarms and/or actions based on preconfigured events. Through the integrated Web Interface it's easy to configure the system functions according to each specific application.

MAIN FUNCTIONS

- Monitoring and control of Input/Output
- Integrated Web server
- Scheduler
- Remote upgrade of software
- Backup/restore of configuration
- Alarms via SMS/EMAIL/CHAT
- Commands via SMS/EMAIL/CHAT
- Real-time graphs
- Plug-in supported
- On-Demand VPN

DATA DELIVERY

- Nethix Cloud
- Email report
- Chat
- HTTP/HTTPS
- MQTT/MQTTS

APPLICATIONS

- Smart system
- Lighting
- Water networks monitoring
- Access control
- Smart agriculture
- Weather monitoring
- Vending machine



we151 LTE

we152 Wi-Fi

IIoT MODULES WITH EXPANDABLE AND PROGRAMMABLE I/O

WE151 and WE152 are the ideal solution for small installations. The compact dimensions and the I/O on board allow an advanced management of the acquired parameters through the integrated Web Interface. The supported Modbus protocol makes the integration with other devices of the plant easier.

MAIN FUNCTIONS

- Monitoring and control of Input/Output
- Integrated Web server
- Scheduler
- Remote upgrade of software
- Backup/restore of configuration
- Alarms via SMS/EMAIL/CHAT
- Commands via SMS/EMAIL/CHAT
- Real-time graphs
- Plug-in supported
- VPN
- Modbus RTU

DATA DELIVERY

- Nethix Cloud
- Email report
- Chat
- HTTP/HTTPS
- MQTT/MQTTS
- FTP/FTPS

APPLICATIONS

- Smart systems
- Pump stations remote control
- Silos monitoring
- Water leak detection
- Water quality control
- Water lifting system
- Weather monitoring
- Meter reading



we500+

IIoT GATEWAY with EXPANDABLE AND PROGRAMMABLE I/O

WE500+ is an end-to-end professional solution designed for industrial applications, that collects in one single platform all the most important connectivity functions allowing a complete and automated remote management of any plant.

Beside the I/O already available on board, the system can be expanded through Modbus Protocol.



MAIN FUNCTIONS

- Input/Output monitoring and control
- Modbus Client RTU/TCP
- Modbus Server RTU/TCP
- Built-in Web Server
- Scheduler
- Datalogger
- Remote software upgrade
- Configuration backup/restore
- Multi-level users and groups
- Advanced events management
- Alarms via SMS/Email/Chat
- Commands via SMS/Email/Chat
- Real-time graphs
- Plug-ins support
- IPcam support
- VPN

DATA DELIVERY

- Nethix Cloud
- Email report
- Chat
- HTTP/HTTPS
- MQTT/MQTTS
- FTP/FTPS
- Dropbox

APPLICATIONS

- Water and gas
- Energy and environment
- Industrial automation
- Predictive maintenance
- Remote access to PLC/HMI/PC
- Building automation
- Broadcast and telecom

we500⁺HD

IIoT GATEWAY for IP68 applications

WE500+HD is designed for those, who need a high performance gateway, programmable and expandable, but at the same time robust, waterproof and suitable for application in the most critical environments.



MAIN FUNCTIONS

- Input/Output monitoring and control
- Modbus Client/Server RTU/TCP
- Modbus/MQTT Gateway
- Integrated Web-Server
- Scheduler
- Datalogger
- Remote Software Upgrade
- Backup/Restore Configuration
- Users and Groups on more levels
- Advanced events management
- Alarm sending via SMS, EMAIL, CHAT
- Command sending via SMS, EMAIL, CHAT
- Real-time graphs
- Geolocalization
- VPN

DATA DELIVERY

- Nethix Cloud
- Email report
- Chat
- HTTP/HTTPS
- MQTT/MQTTS
- FTP/FTPS
- Dropbox

APPLICATIONS

- Automotive
- Fleets of mobile vehicles
- Control of cranes and mobile platforms
- Central-Pivot irrigation systems
- Gensets monitoring
- Boat equipment monitoring
- Trucks load-data management
- Farm machinery monitoring

we500⁺ PLC

IIoT GATEWAY with integrated PLC

WE500+ PLC combines the computing power and the connectivity of WE500+ with the advanced functions of the PLC-programming.

The configuration suite allows to use the five main programming languages (Ladder Logic, Function Block, Structure Text, AWL, Functional Chart): they allow to elaborate advanced logics, in order to fulfill the most demanding requirements of any industrial automated plant.

The PLC functions are integrated with those already available inside WE500+, thus allowing the management of alarm thresholds (with real-time notifications to the operator), the storing of the data acquired from the field and the data delivery to IoT platforms, thanks to the integrated connectivity.

Functions

- **Integrated connectivity:** Wi-Fi, LTE, Ethernet and support of several communication protocols
- **Data computing:** data collection and management, thresholds and alarms settings
- **I/O expandibility:** compatibility with Modbus RTU e TCP/IP devices
- **Performing HW:** advanced logics within a reduced time cycle
- **Access to libraries:** management of function-blocks that can be organized in libraries
- **Functioning simulation:** check the programming code before loading it into the device



we200+

INDUSTRIAL ROUTER

WE200+ is an efficient and reliable 4G industrial router, that allows the remote access to any device, machine or plant over serial interface, Ethernet, USB or optical fiber.

It's the perfect solution for the remote configuration and maintenance of any machine.

WE200+ is compatible with all devices having serial ports RS232/RS485 and USB, independently from the used protocol.

Thanks to the integrated web interface, WE200+ is easy to configure and to use and doesn't require any particular preparation or training.



we120

SMS/GSM REMOTE CONTROL SOLUTION

WE120 is a robust, compact and reliable solution for the remote control and monitoring of small industrial or domotic installations, based on SMS.

It allows to control in real time the system status of machines or devices and to interact via SMS through simple commands as: switch on, switch off or set.

WE120 is expandable and configurable from Windows, Mac OS and Linux.



DEEPLUG

BATTERY POWERED REMOTE MONITORING SYSTEM IP68

DeepLog is a battery powered datalogger, specifically designed for the monitoring of water networks and unattended plants. In order to preserve the battery life, DeepLog remains in energy saving status and periodically wakes up according to the preconfigured intervals of time, defined by the user. Once activated, DeepLog reads the parameters collected by the wired sensors. All collected data are then saved locally and forwarded to the platform Deeplog Cloud (or to any third platform).

- Remote upgrade without on-site interventions
- Easy configuration via Bluetooth
- Quick and easy battery change

DEEPLUG PORTAL

Deeplog Portal offers a tailor-made solution for the management of the delivered data without installing and configuring any additional Software.

Through any browser it's possible to access from any device (PC, tablet and smartphone) to your account, using a dedicated and easy-to-use interface.

Once logged in, it's possible to visualize the data coming from one or more Deeplogs in tabs or charts, and export them in the desired format.



tp100 *tp200*

TOUCH PANEL

TP100 and TP200 are part of Nethix touch panels' family. They are compatible with WE500+ and any other Modbus device, they allow to visualize all Modbus variables in real-time. TP100/TP200 acquire the status of the signals, coming from the devices connected to the communication bus, and show them on the display through a user-friendly interface. They also allow to display the trend of the signals over time on real-time diagrams and highlight possible alarm situations.

JUST ONE CLICK

The configuration of TP100/TP200 is very easy: it's possible to enter the configuration wizard through any web-browser; on the wizard it's possible to set the registers to be acquired and show or adjust the position on display, thanks to a preview available in real-time. Once the configuration is completed, it's possible to download the generated file and transfer it to the TP100/TP200 via USB, without need of using any additional Software or driver on the PC.



*ups***500** *ups***150**

SWITCH MODE POWER SUPPLY UNITS

UPS500 and UPS150 are switch mode power supply units with backup battery pack, specifically designed and developed for all Nethix's remote monitoring and control devices.

The first one has been developed as a complementary product OF WE500+, while the second is designed to be integrated with WE151 and WE152.

Through the two available outputs, they can detect network outages or low battery power and send a notification to the connected devices that, in turn, will inform one or more users and power-off the devices safely, avoiding uncontrolled switch-offs.

PS110, PS150 and PS300 are also available to complete the range.



*xp***500** *xp***150** *xp***100**

EXPANSIONS

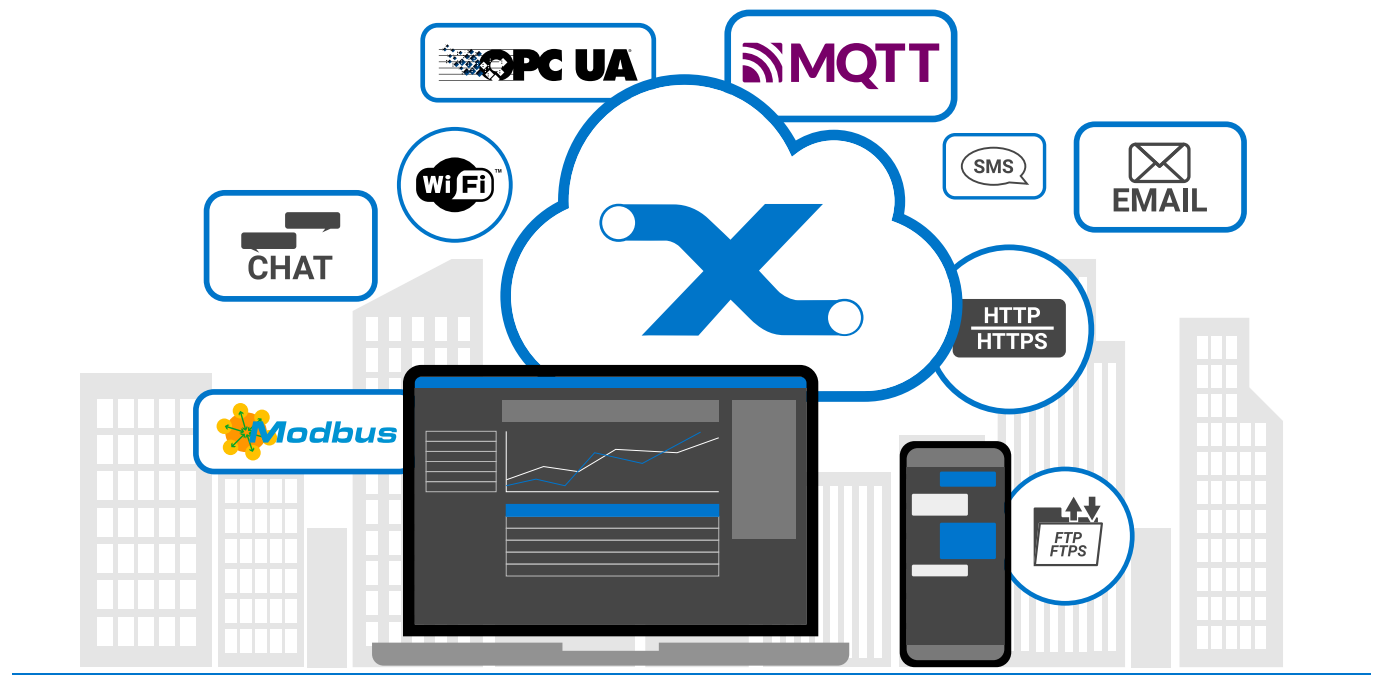
Some applications may require a higher number of I/O than those already available on board of the RTU. For such cases it's possible to add digital or analogue outputs/inputs using the expanders of the XP500 family (suitable for WE500+), XP150 (WE151, WE152) and XP100 (WE120).

These additional modules are easy to install and to configure through a guided procedure.

The XP500, XP150 and XP100 expanders communicate with the device through Modbus RTU Protocol on RS485, while the XP500ETH modules use Modbus TCP on Ethernet.

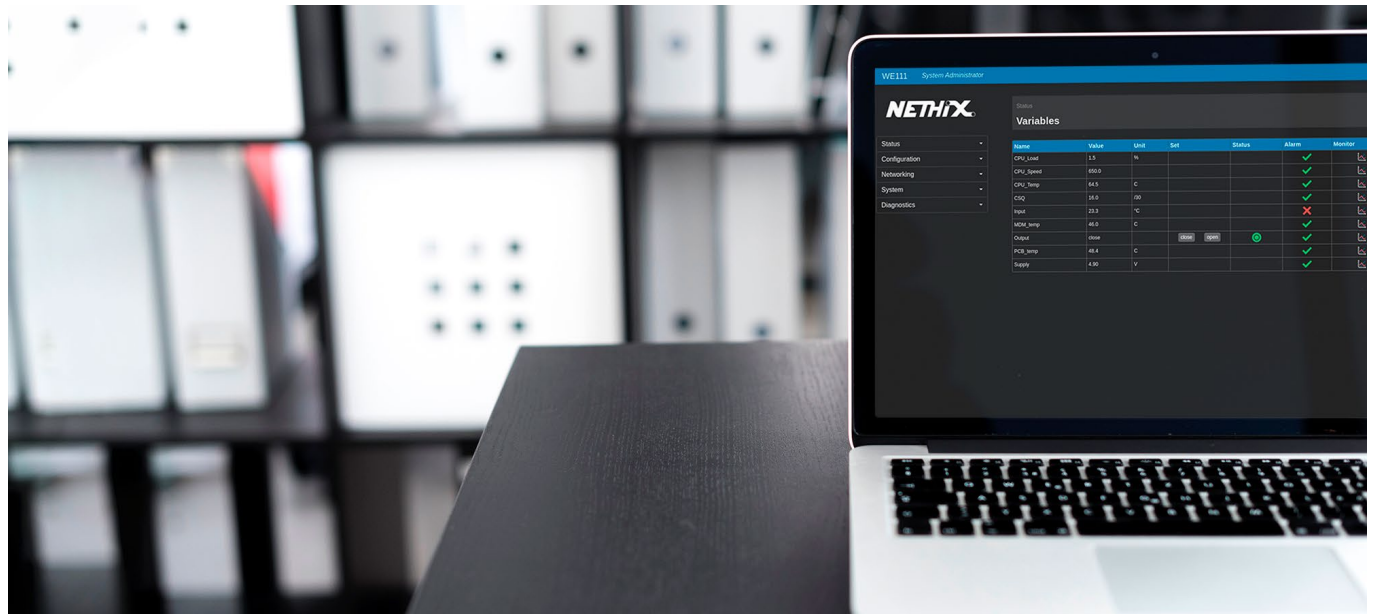
It's also allowed to connect several expanders to one single RTU.

services and FEATURES



Nethix Echo-system includes a high number of services and features, that combined and integrated with the devices can grant a highly customizable and enjoyable “user experience”.

All this allows an easy, quick and reliable collection, management and visualization of the data, granting a tailor-made configuration and communication through several modalities and protocols.

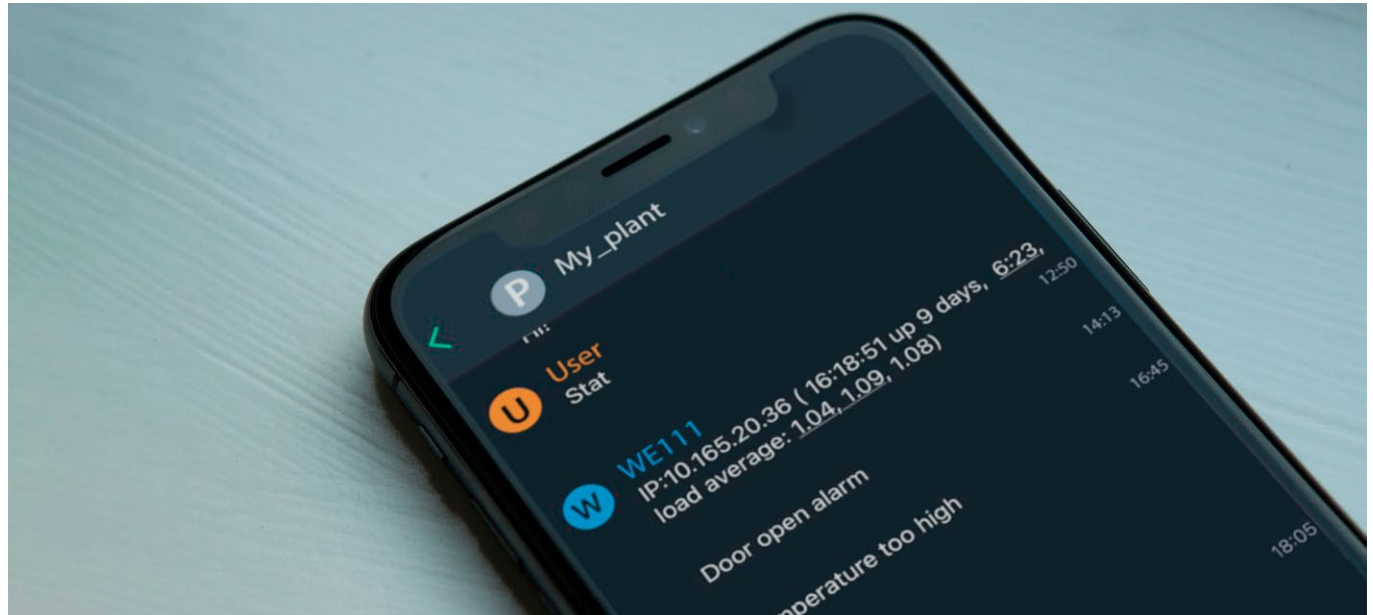


WEB SERVER

The integrated Web Server of the device can be reached remotely and allows the device configuration. Through any browser, without using any additional Software, it's possible to enter the device and set thresholds, monitor the system status in real time and change some operational parameters and setpoints.

DASHBOARD

The integrated Web Server offers also the use of a Dashboard: a tool that allows to graphically display on dynamic charts and multi-trace graphs the parameters acquired from the field, and rapidly visualize through widgets the alarm signals.



MQTT

The Next Family devices support the use of the MQTT/MQTTS Protocol: this allows to expand considerably the number of managed signals and to connect two or more devices with each other. Being completely configurable, this Protocol is compatible with any broker of the customer or of any third party.

CHAT

Using an instant messaging system it's possible to communicate with the devices, sending commands or receiving alarms notifications in real time.



Nethix srl
Via dei Pini, 21
31033 Castelfranco Veneto (TV) - ITALY
Tel +39 0423 770750
www.nethix.com